

6

5

4

3

2

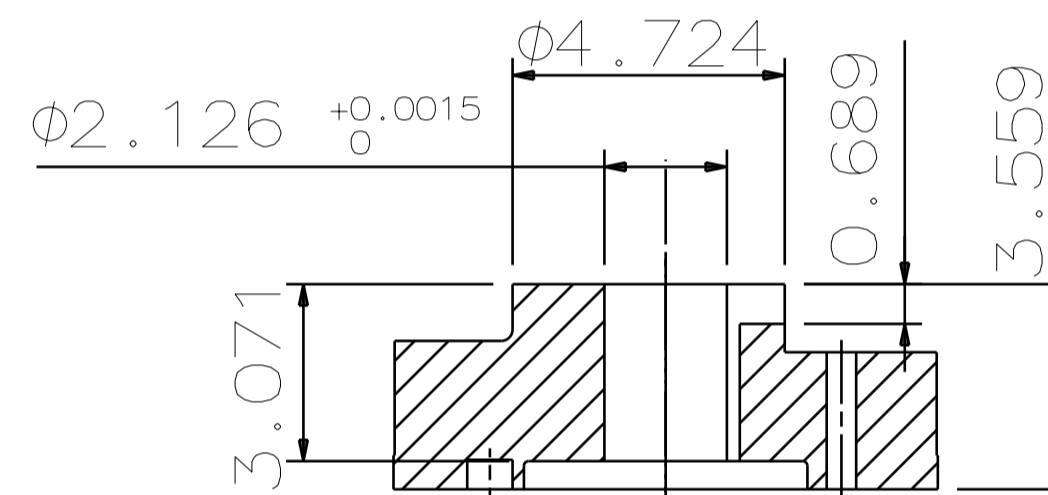
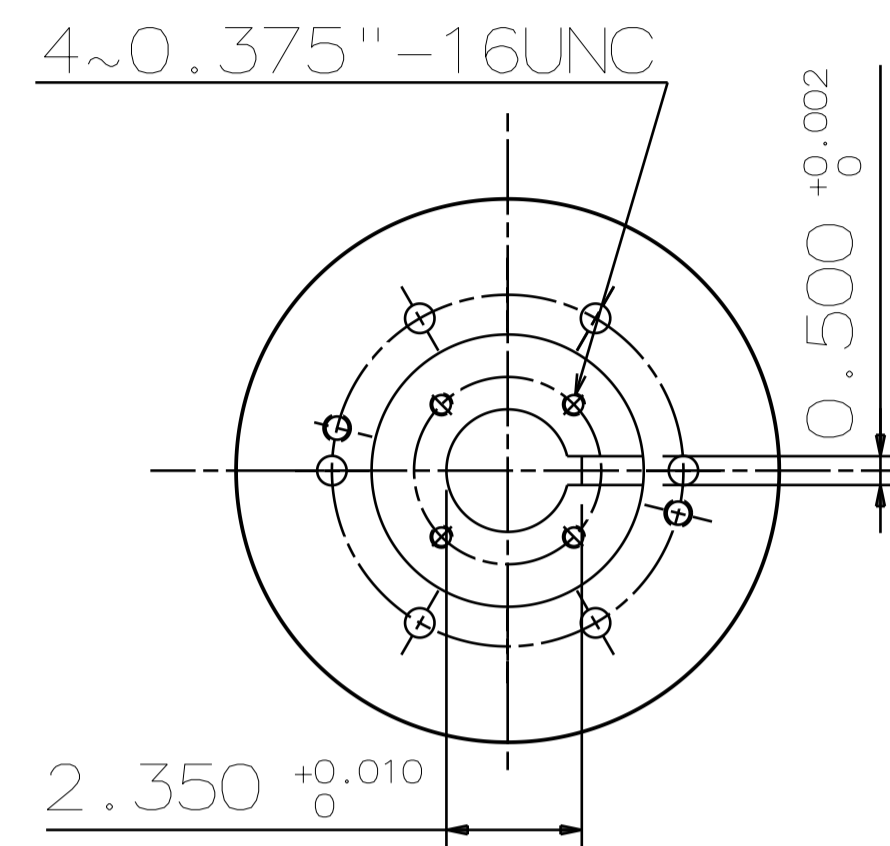
1

TYPE	OUTPUT		POLE	TIME RATING	VOLTAGE V	Hz	SYN.SPEED R.P.M
	HP.	kW.					
AMRKNH	250	186.4	6	CONT	2300/4000	60	1200

ENCLOSED VENTILATED VERTICAL HOLLOW SHAFT TYPE, SQUIRREL CAGE ROTOR
NEMA WEATHER PROTECTED TYPE 1

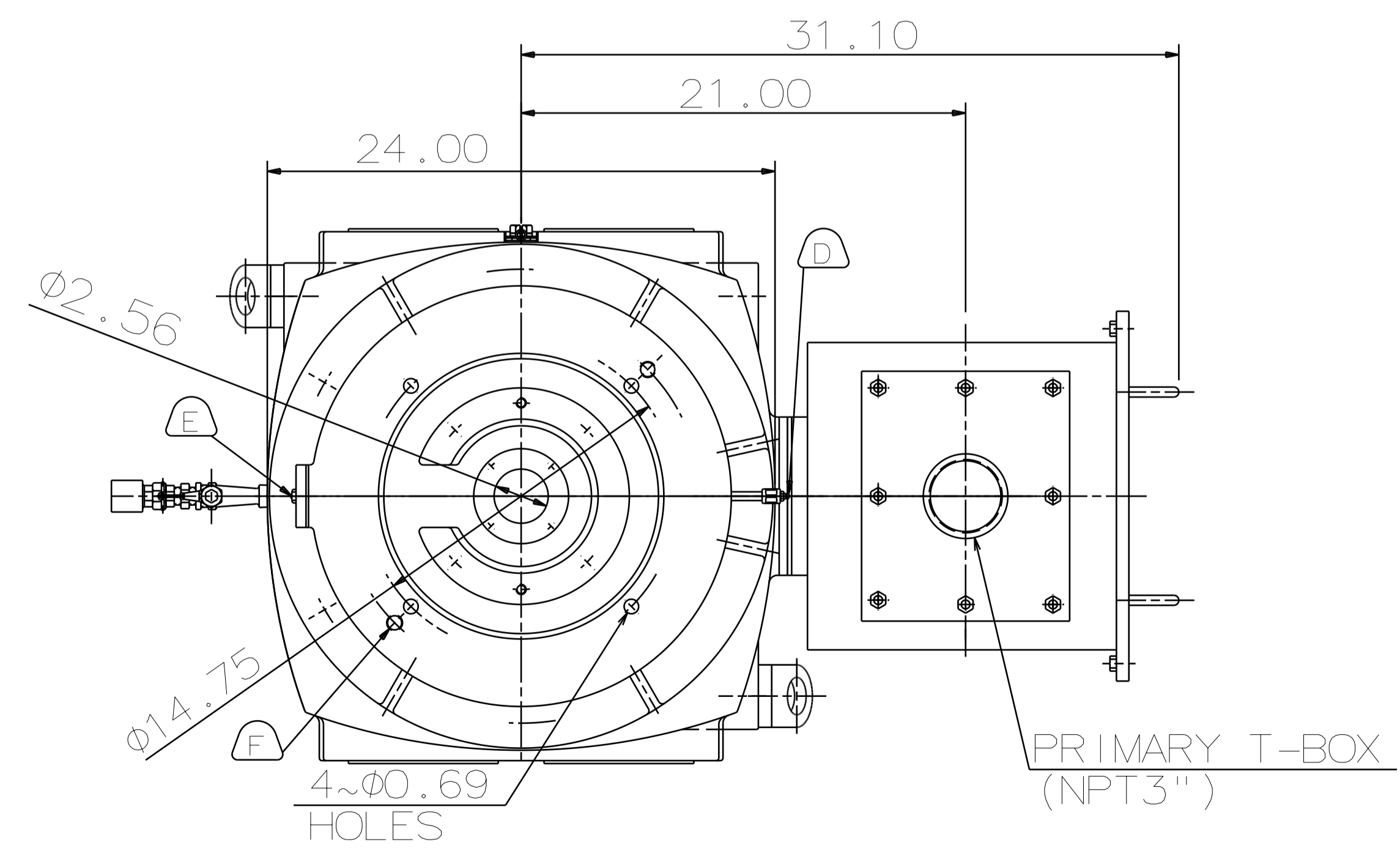
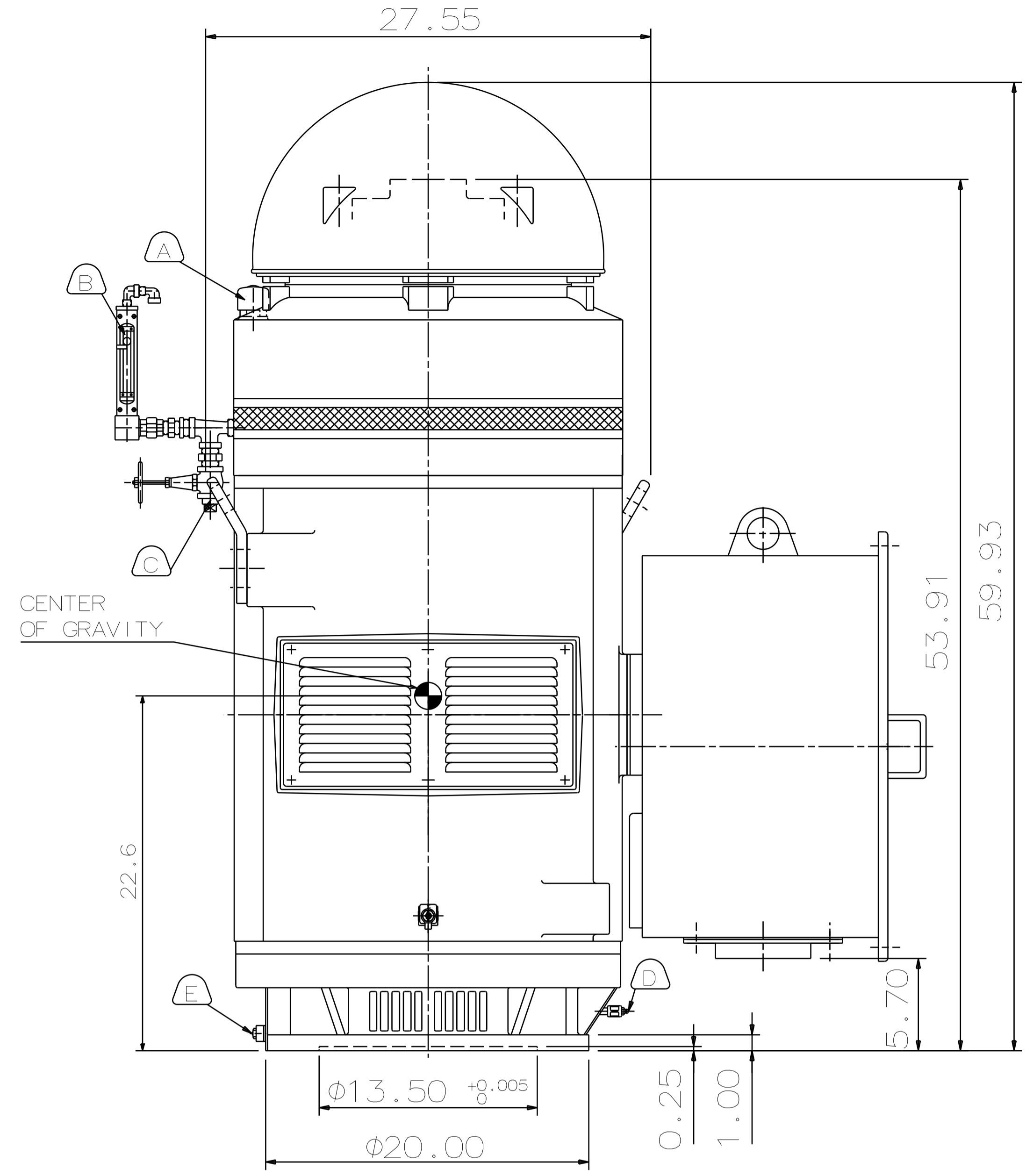
NOTE:

1. DIMENSIONS IN INCH
2. FRAME NO. 449TP
3. F CLASS INSULATION, S.F. 1.15
4. FOR DIRECT COUPLING.
5. BEARING SIZE:
UPPER BEARING: 7326B [UNINSULATED]
LOWER BEARING: 6318C3 [UNINSULATED]
6. LUBRICATION:
UPPER BEARING USE OIL.
OIL VISCOSITY: ISO VG68 [300 SSU/100°F]
OIL QUANTITY: 5.0 GAL.
LOWER BEARING USE MOBIL POLYREX EM GREASE.
7. ROTATION: COUNTER-CLOCKWISE (VIEWED FROM TOP).
8. WITH NON-REVERSE RATCHET MECHANISM.
9. WITH GIB KEY: 0.500X0.500X3.071, 1PCS
10. APPROXIMATE WEIGHT: 2980
11. DOWNTHRUST: 11,300 LBS (L10-8800HRS)
12. REED FREQUENCY: 36 HZ
13. SPACE HEATER RATED AT 120 VOLT, SINGLE PHASE, 200 WATTS, LEADS TERMINATE IN MAIN LEAD BOX.



COUPLING
(ENLARGED VIEW)

CENTER OF GRAVITY



- (A) OIL FILLER [UPPER BEARING]
- (B) OIL GAUGE [UPPER BEARING]
- (C) OIL DRAIN [UPPER BEARING]
- (D) GREASE INLET NIPPLE [LOWER BEARING]
- (E) GREASE OUTLET [LOWER BEARING]
- (F) 2-M16 VERTICAL JACKING HOLES 180° APART IN MOTOR BASE.
- (G) M10 TAPPED HOLE IN MOTOR BASE WITH GROUNDING TERMINAL [R38-10] & BOLT LOCATED AS SHOWN.

DATE	DEC 08 2016
VHKP2506	

OUTLINE DIMENSIONS
3-PHASE INDUCTION MOTOR

DWN.	Y. YANG	JUN.02.2015
CHKD.	R. LEE	JUN.02.2015
APPD.	C. LIU	JUN.02.2015



DWG NO. REV:00
4B040L471

6

5

4

3

2

1